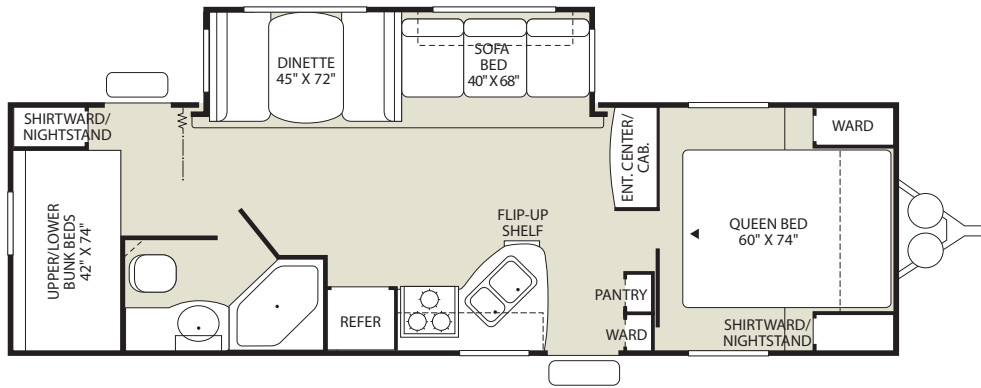




OPT. 807
SLEEPER SOFA



2008 Wilderness 270DBHS



DIMENSIONS AND CAPACITIES

Length (Feet and Inches) ^{6,7,8}	30' 7"
Height (Feet and Inches) ^{6,9}	10' 2"
Fresh Water Holding Tank (gal) ^{6,10}	50
Grey Water Holding Tank (gal) ^{6,10}	40
Second Grey Water Holding Tank (gal) ^{6,10}	N/A
Black Water Holding Tank (gal) ^{6,10}	40
Propane Capacity (lbs.) ^{6,10}	60
Tire Size	ST225/75 15D

CHASSIS

Specifications	
GVWR (lbs) ¹	8,500
Cargo Carrying Capacity (lbs) ^{2,3}	2,252
Gross Dry Weight (lbs) ^{4,3}	6,248
Hitch Dry Weight (lbs) ^{4,3,5}	665

*NOTE: Price shown is base MSRP and does not include accessories, options, freight, or taxes. Please see your dealer for exact pricing, which could exceed MSRP. Prices and specifications are subject to change without notice.

- GVWR (Gross Vehicle Weight Rating) is the maximum permissible weight of this trailer when fully loaded. It includes all weight at the trailer axle(s) and tongue or pin.
- Cargo Carrying Capacity is determined by subtracting Gross Dry Weight from GVWR. Cargo includes all fluids, optional features, equipment, and personal cargo.
- Approximate weight.
- All dry weights are based on the standard model and do not include optional features or equipment.
- Hitch weights are dependent upon how the trailer is equipped with options, on-board cargo and tank fluid levels. Actual hitch weights may be higher or lower than shown. It is recommended that the tow vehicle and hitch for your trailer have sufficient capacity to accommodate actual usage.
- Approximate capacity.
- Add 10" if equipped with optional spare tire and carrier.
- Length is measured from hitch or pin box to rear bumper (excludes accessories). Trailer length includes hitch; fifth wheel includes standard pin box.
- Actual height may be lower, based on option offerings. Consult with your dealer to obtain actual height for the unit you are interested in.
- Water weight equals 8.3 lbs per gallon. Propane weight equals 4.2 lbs per gallon.

*Sleeping capacity is a variable number and is affected by items such as size of occupant, options and floor plan.

Some models are not available in all areas of the country. Please see your local dealer for model availability.

RV OWNCARE. See your [nearest Fleetwood dealer](#) for a full explanation of benefits and restrictions of our 2007 warranty.

N/A = Not Available.

Liquid Weight Reference

Water (gal/ltrs) = (8.3 lbs/3.8 kgs), Gas (gal/ltrs) = (6.1 lbs/2.8 kgs), Diesel (gal/ltrs) = (7.1 lbs/3.2 kgs), Propane (gal/ltrs) = (4.2 lbs/1.9 kgs)

Metric Conversion

Multiply pounds x 0.453 to obtain kilograms, Multiply gallons x 3.785 to obtain liters

IMPORTANT-PLEASE READ: Product information, photography and illustrations included on this page were as accurate as possible at the time of publication. For further product information and changes, please contact your local Fleetwood dealer. Prices, materials, design and specifications are subject to change without notice. All weights, fuel, liquid capacities and dimensions are approximate. Fleetwood has designed its recreational vehicles to provide a variety of uses for its customers. Each vehicle features optimal seating, sleeping, storage and fluid capacities. The user is responsible for selecting the proper combination of loads (i.e. equipment, fluids, cargo, etc.) to ensure that the vehicle's capacities are not exceeded.